

**GRAND JUNCTION** economic  
PARTNERSHIP

# ANNUAL REPORT

ECONOMIC IMPACT & RETURN ON INVESTMENT

*For every **\$1** invested in GJEP  
in 2024, we generated **\$93**  
in economic impact.*

DATE ISSUED: MARCH 2025

20  
24

# CONTENTS

ORGANIZATION OVERVIEW	05
MESA COUNTY ECONOMIC SNAPSHOT	09
GJEP'S ECONOMIC IMPACT	11
CASE STUDIES	13
PROSPECT DEVELOPMENT	23
CELEBRATING 40 YEARS OF SUCCESS	25
ECONOMIC SUMMIT RECAP	27
GJEP'S PRESENCE	29
WAYS TO GET INVOLVED	30



# WELCOME

## GRAND JUNCTION economic PARTNERSHIP

***As I reflect on 2024, I am incredibly proud of the transformative impact we have made as an organization and as a community.***

This year, GJEP directly oversaw nine quality relocations and expansions to the Grand Junction area. Our ongoing efforts have resulted in 299 net new primary jobs in 2024, with an average wage of \$62,201.

Measuring our economic impact is essential in demonstrating GJEP's value to our stakeholders. Our goal is to increase our economic impact each year, and I'm proud to report that we have successfully done so:

### **Total Economic Impact:**

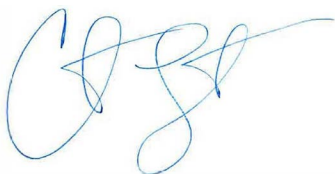
- **2022: \$10,558,889**
- **2023: \$52,270,078**
- **2024: \$91,252,018**

Thanks to our investors and stakeholders, we have achieved record-breaking economic growth, hosted impactful events like the Western Colorado Economic Summit, and engaged in critical conversations that shape our community's future. With continued collaboration, we will drive smart, sustainable growth that ensures a thriving future for the Grand Junction area.

As we look ahead to 2025, we are filled with optimism and determination to build on this momentum. The Grand Junction Economic Partnership remains committed to fostering sustainable economic growth, attracting high-quality jobs, and enhancing the prosperity of our community. With the unwavering support of our investors, stakeholders, and local leaders, we will continue to drive innovation, strengthen key industries, and create new opportunities for businesses and residents alike.

Together, we are shaping a vibrant and resilient future for the Grand Junction area, one built on collaboration, strategic vision, and a shared commitment to long-term success. Here's to another year of progress and prosperity in 2025!

Sincerely,



Curtis Englehart, Executive Director  
Grand Junction Economic Partnership  
curtis@gjep.org • 970-245-4332 ext. 5





# FROM OUR 2024 BOARD CHAIRMAN



It's hard to believe it is 2025! Time seems to fly by faster with each passing year. It was an honor and a privilege to serve as the 2024 board chair for the Grand Junction Economic Partnership (GJEP). With over twenty active board members and a multitude of local community business partners, we have been able to make a significant impact in maintaining a strong and vibrant economy.

Our network of dedicated businesses and individuals helped foster nearly 300 new primary jobs in 2024, generating a positive economic impact of over \$91 million. Following a highly competitive relocation determination process, Goose Gear chose to relocate to Grand Junction and Amazon expanded into western Colorado with a \$25 million capital investment and 100 new jobs. OakStar Bank broke ground on their new

facility at Las Colonias and Grand Valley Ice was approved for the Rural Jump-Start Program. These are just a few of the notable projects GJEP helped advance in 2024.

The work that GJEP does in collaboration with other community stakeholders is paramount to the local economic vitality of the Grand Valley. With an unwavering commitment to sustain a strong business climate, it is easy to see why GJEP is held in such high regard.

In 2024, GJEP celebrated their 40th anniversary and received the highly coveted International Economic Development Council (IEDC) Excellence in Economic Development Award, recognizing the 2023 annual report and economic impact. Additionally, GJEP collaborated with representatives from Colorado Mesa University, Mesa County, Colorado River District and Group Sense to launch RAPIDS, a tech hub initiative to help protect critical infrastructure, particularly the Colorado River, through cybersecurity measures, development of college-level curriculum to support industry workforce development, enabling secure and efficient management of water resources, and provide a service economy to roughly 300 municipal water districts along the Colorado River.

I am extremely excited to see what the future holds for GJEP and the Grand Valley. I am continually impressed by the level of talent, leadership and dedication that GJEP exhibits locally and throughout our region. As a board, we will work tirelessly to find new and innovative ways to build and cultivate business relationships to benefit our community and local economy. Please don't hesitate to reach out to the GJEP staff or members of the board with any questions or suggestions. Thank you for your unwavering support of the Grand Junction Economic Partnership.

A handwritten signature in black ink that reads "Chris Thomas". The signature is fluid and cursive, with a large, stylized "C" and "T".

Chris Thomas  
President & CEO, Community Hospital





# 2024 BOARD OF DIRECTORS

## EXECUTIVE COMMITTEE

**Chris Thomas | Chairman**  
Community Hospital

**Brad McCloud | Vice-Chair**  
Xcel Energy

**Pat Tucker | Secretary**  
Conquest Development

**Tim Fry | Treasurer**  
Mountain Racing Products

**Shane Haas | Immediate Past Chair**  
FCI Constructors

**Quint Shear | Exec. At Large**  
SHEAR Inc.

**Karen Troester | Exec. at Large**  
Grand Junction Federal Credit Union

**Mike Bennett\***  
City of Grand Junction

**Stephanie Copeland**  
Four Points Funding

**Bobbie Daniel**  
Mesa County  
Commissioner

**Robert Glover**  
Shaw Construction

**Aaron Hancey**  
City of Fruita

**Janet Hawkinson**  
Town of Palisade

**Cody Kennedy**  
Grand Junction  
City Council

**John Marshall**  
Colorado Mesa  
University

**Sarah Matchett**  
Town of Palisade

**Jay Seaton**  
The Daily Sentinel

**Ryan Schramm**  
Powderhorn Mtn. Resort

**Thaddeus Shrader**  
Bonsai Design

**Doug Simons**  
Enstrom Candies

**Mike Sneddon**  
SG Aerospace & Gas

**Mike Stahl**  
Hilltop Community  
Resources

**Megan Terlecky Fiedler**  
Intermountain Health

**Denny Granum**  
Monument Homes  
Member Emeritus

**Jamie Hamilton**  
Home Loan  
Member Emeritus

*\*Ex-Officio (non-voting)*

# INTRODUCTION



## ABOUT THE GRAND JUNCTION ECONOMIC PARTNERSHIP (GJEP)

The Grand Junction Economic Partnership is a 501c(3) non-profit organization that focuses on economic development within Mesa County, including the City of Grand Junction, the City of Fruita, and the Town of Palisade.

### MISSION

01

To enhance the economic vitality of Mesa County and Colorado's Grand Junction area, creating a strong and diverse economy and an improved quality of life.

### VISION

02

To create quality jobs and expand capital investment through the attraction, expansion, and retention of primary business.



# OUR SERVICES

**GRAND JUNCTION** economic  
PARTNERSHIP

GJEP offers a variety of no-cost and low-cost business development services designed to help businesses thrive in Mesa County. Whether you are relocating to the region, expanding an existing business, or simply need assistance navigating available resources, we're here to help.

## **SITE SELECTION & REAL ESTATE SUPPORT**

Tailored property portfolios to fit your business needs, leveraging our network of local brokers and robust site selection tools.

## **RESOURCE IDENTIFICATION & APPLICATION SUPPORT**

Guidance on identifying and securing eligible incentives and business development programs at the state and local levels.

## **ECONOMIC IMPACT REPORTING & ANALYSIS**

In-depth analysis of how your investment and job creation will benefit the local economy.

## **COMMUNITY CONNECTIONS & REMOVING BARRIERS**

Direct access to key leaders and partners, along with proactive solutions to address business challenges.





# STRATEGIC GOALS & INITIATIVES

## **1. Drive the creation of primary jobs through targeted business attraction and expansion in the following industries:**

- Aerospace & Aviation
- Manufacturing
- Healthcare/Medical
- Outdoor & More

## **2. Promote Mesa County's business assets and key industries through:**

- Website Development
- Targeted Marketing
- Multi-media Advertising
- Trade Shows & Conferences
- Public Relations

## **3. Assist business relocation and expansion into our community by aiding in:**

- Site Selection
- Incentive Negotiations
- Workforce Development
- Community Connections

## **4. Collaboration with economic development partners, local and state governments, and key stakeholders to elevate our community.**

*For more information on GJEP's recent activity, strategic goals and initiatives, and ways to partner with our organization, please contact Executive Director Curtis Englehart at [curtis@gjep.org](mailto:curtis@gjep.org) or call 970-245-4332 ext. 5*

# GRAND JUNCTION ECONOMIC PARTNERSHIP STAFF DIRECTORY



## **Curtis Englehart**

Executive Director

curtis@gjep.org | 970 - 245 - 4332 ext. 5



## **Steve Jozefczyk**

Deputy Director

steve@gjep.org | 970 - 245 - 4332 ext. 4



## **Matt Bell**

Business Development Manager

matt@gjep.org | 970 - 245 - 4332 ext. 3



## **Selena Sanchez**

Director of Marketing

selena@gjep.org | 970 - 245 - 4332 ext. 6



## **Karen Mahoney**

Office Manager

karen@gjep.org | 970 - 245 - 4332 ext. 2



# MESA COUNTY ECONOMIC OVERVIEW



The Grand Junction area is the largest metropolitan region between Denver, CO and Salt Lake City, UT. It is centrally located with excellent connectivity to national and international markets via I-70. It is home to world class outdoor amenities, a regional airport (GJT), and Colorado Mesa University—one of the fastest growing universities in the nation.

**159,681**

**Population**

**76,116**

**Labor Force\***

**4.8%**

**Unemployment Rate\***

**\$56,524**

**Mesa County  
Avg. Annual Wage**

**\$403,854**

**Average Mesa County  
Home Value**



**For updates on the state of the economy, check the  
quarterly Mesa County Economic Update published by  
Colorado Mesa University at  
[coloradomesa.edu/business/economic-newsletter](https://coloradomesa.edu/business/economic-newsletter)**

**Sources:** United States Census Bureau (July 2023), Colorado Department of Labor and Employment (December 2024), Colorado Office of Economic Development & International Trade, Zillow.com

*\*Latest available data: December 2024*



# MAJOR PRIMARY EMPLOYERS

1

**Mesa County  
School District 51**  
3,465

2

**Intermountain Health  
St. Mary's Hospital**  
2,846

3

**Community Hospital**  
1,400

4

**Mesa County**  
1,271

5

**Colorado Mesa University**  
1,173

6

**Grand Junction VA  
Medical Center**  
1022

7

**City of  
Grand Junction**  
860

8

**Family Health  
West**  
616

9

**West Star  
Aviation**  
559

10

**HopeWest**  
350

11

**Calfrac Well  
Services Corp**  
318

12

**Alpine Bank**  
297

13

**Primary Care  
Partners**  
285

14

**United Companies**  
274

15

**Leitner Poma of  
America**  
230

16

**STRiVE**  
222

17

**RSI Entech**  
216

18

**City of Fruita**  
208

19

**Valor Tactical  
Innovation**  
173

20

**FCI Constructors**  
150

*Data Sourced March 2025*

*Employee counts sourced directly from the organizations listed and data provided through Mesa County Workforce Center.*

## 2024 ECONOMIC IMPACT:

We are grateful for the opportunity to work directly with several businesses relocating or expanding into our community this year and provide ongoing support to past wins. The businesses we assist represent a variety of industries, employ locally, and directly impact Mesa County's economy.



# 299

New 2024 Primary  
Jobs Created

# 147

Additional Primary  
Jobs Projected



# \$62,201

Avg. Annual Wage of  
New Jobs Created

### EMPLOYMENT IMPACT

## \$32,962,157

### CAPITAL INVESTMENT

## \$35,673,422

### CAPITAL EXPENDITURE IMPACT

## \$58,289,861

### TOTAL ECONOMIC IMPACT

# \$91,252,018



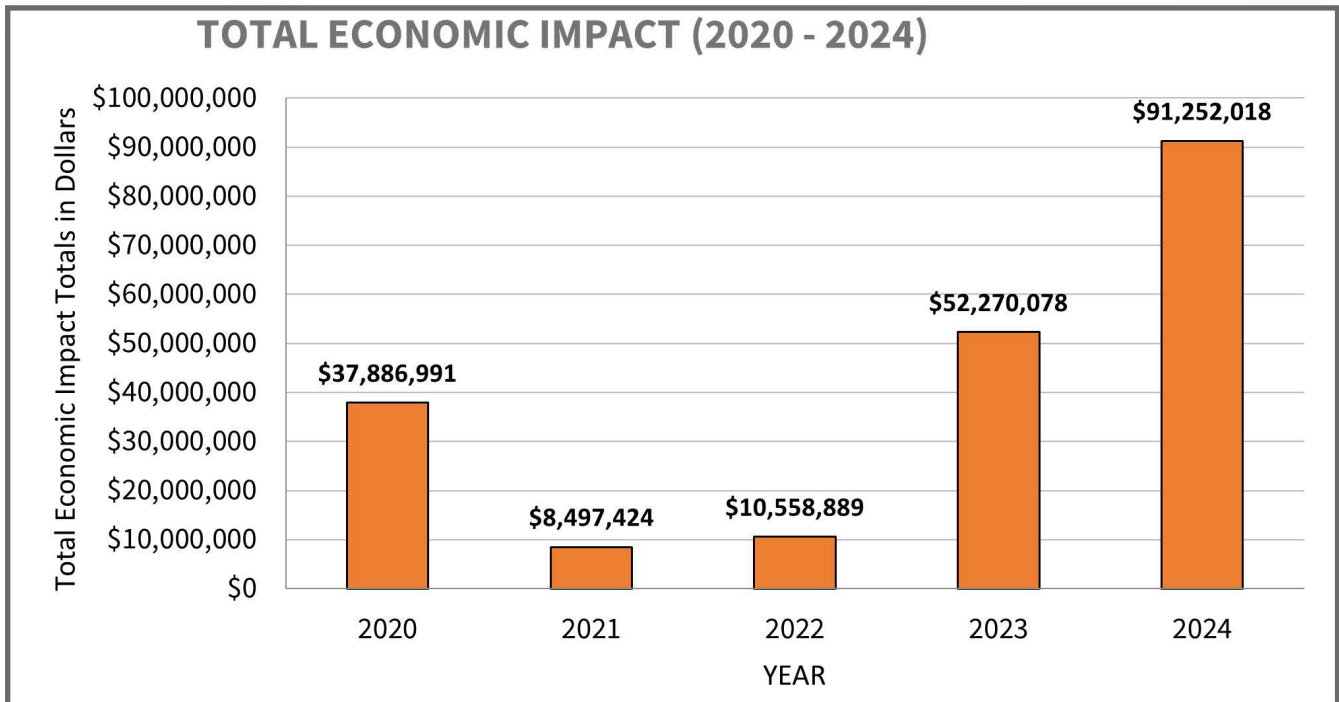
**For every \$1 invested in GJEP  
in 2024, we generated \$93  
in economic impact.**

**BUSINESS RETENTION RATE: 77%** of all GJEP wins are  
still open and doing  
business in the area.

The Grand Junction Economic Partnership calculates economic impact using Economic Impact Modeling Software: IMPLAN® model, [2023] Data, using inputs provided by the user and IMPLAN Group LLC, IMPLAN System (data and software), 16905 Northcross Dr., Suite 120, Huntersville, NC 28078 [www.IMPLAN.com](http://www.IMPLAN.com).

# GJEP'S 5 YEAR IMPACT

	2020	2021	2022	2023	2024
<b>Jobs Created</b>	29	38	83	178	299
<b>Potential Jobs</b>	139	9	333	128	147
<b>Average Salary</b>	\$47,584	\$50,360	\$56,244	\$59,969	\$62,201
<b>Capital Expenditures</b>	\$21,361,251	\$2,775,000	\$1,025,000	\$20,714,329	\$35,673,422
<b>Economic Impact</b>	<b>\$37,886,991</b>	<b>\$8,497,424</b>	<b>\$10,558,889</b>	<b>\$52,270,078</b>	<b>\$91,252,018</b>



**TOTAL EMPLOYMENT IMPACT**  
2020 - 2024

**\$66,644,204 + \$133,821,196 = \$200,465,400**

**TOTAL CAPITAL EXPENDITURE**  
IMPACT 2020 - 2024

**TOTAL ECONOMIC IMPACT**  
2020 - 2024

**TOTAL JOB CREATION**  
2020 - 2024

**627**

**Primary Jobs  
Created**

**756**

**Additional Primary  
Jobs Projected**



# A MILESTONE FOR WESTERN COLORADO: AMAZON'S LAST MILE FACILITY



**A major milestone for Mesa County's economy, Amazon's new 38,000 square-foot facility, powering the last-mile of delivery services marks the company's first major expansion into western Colorado—bringing 100 new jobs, faster deliveries, and greater economic opportunity for the region.**

Amazon's decision to invest in Mesa County was the result of strong public-private partnerships. Sam Bailey, Senior Manager of Economic Development Policy at Amazon, shared, ***"We rely on partnerships with communities when we make sizable investments like this. My first call was to the Grand Junction Economic Partnership and the City of Grand Junction to articulate that we know we need to be here to serve our customers, and we want to work with the community to make it happen."***

From the early stages, GJEP, the City of Grand Junction, Mesa County, and regional economic development

partners worked closely with Amazon to streamline the development processes and support the expansion. GJEP facilitated key community connections and identified a suitable off-market site through our network for real estate brokers.

The project was officially announced in May 2024 and the facility was constructed in record time, being able to open its doors and serve the community by December.

Locally, Amazon has also forged a relationship with the Mesa Workforce Center by utilizing their hiring resources to fill available positions. These partnerships are critical in supporting



our workforce and nationwide, 46% of workers hired by Amazon were previously unemployed, providing opportunities to obtain their GED and advance their career trajectory with new skills.

Warehouse site manager, Mike Olish, who is from Grand Junction, shared that Amazon's arrival allowed him and his family to remain in Mesa County by providing him an opportunity to advance his career.

He added, ***"I was a member of this community before Amazon, and I feel like their mission and values align with the community here in Grand Junction. We're able to get packages to our citizens a little bit faster now with nearly 100 associates here working hard to sort through those packages and meet our customer promise."***

The last-mile facility is a critical component of Amazon's supply chain, responsible for the final stage of package delivery to customers' doorsteps, meaning more efficient deliveries for Grand Junction and surrounding areas.

The state-of-the-art facility represents a \$25 million capital investment and marks Amazon's first major expansion into the western slope, signaling a new era of economic growth, job creation, and logistical efficiency.

In addition to Amazon's capital investment and the creation of 100 new jobs, a donation was also presented Riverside Education Center (REC) with a \$10,000 donation, supporting the nonprofit with their mission of empowering youth education through structured tutoring and diverse extracurricular activities.

### IMPACT BY THE NUMBERS



**\$25M+ In Capital Investment**



**100 new jobs created**



**1st Amazon last-mile facility in western Colorado**



**35,000+ packages delivered weekly**



**\$10,000 donated to Riverside Education Center**





# GOOSE GEAR RELOCATES TO GRAND JUNCTION

Family owned and operated, Goose Gear specializes in manufacturing high-quality camping systems for vehicle-based recreation. After experiencing considerable growth and unprecedented sales in 2023, Goose Gear set its sights on new markets and additional segments, including international distribution, new vehicle specific SKUs, and expansion into safety equipment contracts.

The company identified a need for relocation after being blocked by the lack of affordability in Orange County's industrial space. Goose Gear conducted an extensive search for relocation destinations in pursuit of affordability and superior quality of life for its employees. The company considered several locations and ultimately selected Grand Junction, CO after working closely with the Grand Junction Economic Partnership.

GJEP supported Goose Gear's relocation through identifying regional growth opportunities, available incentives, real estate, and workforce development support.

**In partnership with GJEP, Goose Gear secured the **Job Growth Tax Incentive** for the creation of up to 49 new primary jobs over an eight year period, valued at \$535,844 in eligible tax credits.**

The Job Growth Tax Incentive is an eight-year job creation incentive to support competitive, multi-state, or county relocation and expansion projects. The tax credit provides businesses with a Colorado state income tax credit equal to 50% of FICA tax paid by the business per net new job for each calendar year in the credit period.





Additionally, Goose Gear was awarded \$55,000 from the Grand Junction Economic Partnership and the Industrial Development, Inc. (IDI), a sister organization of the Grand Junction Area Chamber of Commerce, to help offset relocation costs including the transportation of manufacturing equipment.

Recruiting Goose Gear into the region underscores the region's ability to remain competitive and attractive to growing businesses seeking affordability, workforce, and unmatched quality of life.

For more information on Goose Gear, please visit [goose-gear.com](https://goose-gear.com).

**“As Goose Gear embarks on its 10th year, we’re excited to announce Grand Junction as our new home. The city’s exceptional outdoor lifestyle echoes our passion and offers strategic advantages for our business.**

**GJEP’s incredible support has been instrumental in facilitating this transition, making Grand Junction an obvious choice for our next chapter.”**

**-Brian Fulton, Founder & CEO**

*(Left) Brian Fulton shows Goose Gear in action, (Right) Aislinn “Goose” Fulton and Brian Fulton*



Photos courtesy of Goose Gear



# WEST STAR AVIATION

## EMBARKS ON MAJOR 109,000 SF EXPANSION



West Star Aviation has announced a major expansion at its full-service Grand Junction (GJT) Maintenance Repair and Overhaul (MRO) facility, further strengthening its role as a key player in Mesa County's economy. Partnering with Tectonic Management Group, the company will construct a new hangar, adding 40,000 square feet of space for maintenance services, avionics installations, and interior refurbishments. The project also includes 38,000 square feet of offices and back shop space, along with 31,000 square feet of ramp space.

This expansion will significantly increase West Star's ability to meet growing demand while supporting operations at Grand Junction Regional Airport, which is undergoing a multi-

year runway improvement project. Scott Sweeney, Vice President/General Manager of West Star's Grand Junction site, emphasized the importance of this investment:

***"This expansion is an exciting milestone for us. We're not just building a new hangar—we're building on the success and dedication of our team."***

***"This will allow us to continue to provide the top-tier service our customers expect while creating new opportunities for our employees and the community."***



## STRATEGIC SUPPORT & INCENTIVES

The Grand Junction Economic Partnership (GJEP) played a critical role in supporting West Star's expansion. Through close collaboration with the Colorado Office of Economic Development & International Trade (OEDIT), GJEP successfully secured both the Strategic Fund and Job Growth Incentive Tax Credits for West Star—a rare achievement, as companies are typically not eligible for both incentives.

This achievement exemplifies the power of community collaboration between GJEP, the City of Grand Junction, Mesa County, the Grand Junction Chamber of Commerce, Industrial Development Inc., and many other dedicated partners.

## ECONOMIC IMPACT & JOB CREATION

West Star Aviation's commitment to growth translates directly into significant economic benefits for the Grand Junction region. The expansion is expected to generate 80–100 new high-quality jobs, boosting local employment opportunities and strengthening the skilled workforce. Additionally, this growth further solidifies the company's long-standing partnership with the Grand Junction Regional Airport, reinforcing the region's status as a key hub for aviation services.

The increased economic activity will also support local businesses, attract additional investment, and contribute to the overall economic vitality of Mesa County.

## LOOKING AHEAD

Construction on the new hangar began in 2025, with completion anticipated by 2026. This development reflects West Star Aviation's long-standing commitment to Mesa County, where it has been a cornerstone of the local economy since 1952. Today, West Star's Grand Junction location employs over 559 skilled professionals, providing top-tier maintenance, avionics, and refurbishment services for business aircraft.

This expansion is yet another example of how Mesa County continues to attract and retain industry-leading companies, fostering economic growth and opportunity for the region.

**The Grand Junction Economic Partnership played a critical role in supporting West Star Aviation's expansion by working with the Colorado Office of Economic Development & International Trade (OEDIT) to secure both the Strategic Fund and Job Growth Tax Incentive—a rare achievement as companies are not typically eligible for both.**



# THE RURAL JUMP-START PROGRAM



EXOPOWER

## EXOPOWER DEVELOPS IN-MOTION

## WIRELESS CHARGING TECHNOLOGY

ExoPower, developers of an in-motion wireless charging system for industrial robots, was successfully approved into the Rural Jump-Start Program with the support of the Grand Junction Economic Partnership.

This breakthrough technology enables these vehicles, including small picking robots, autonomous forklifts, and eventually larger electric vehicles, to charge while they work and move, eliminating the need to halt operations for recharging. Its technology solves significant industry pain points by dramatically increasing productivity and reducing costs. Additionally, a substantial number of industrial vehicles still rely on combustion engines. By eliminating the charging downtime hurdle, ExoPower makes electric propulsion more viable for these vehicles, enabling widespread emissions reduction and advancing environmental sustainability.

ExoPower relocated to the Grand Junction area from Lafayette, CO in 2024 and is currently operating through the Business Incubator Center with plans to connect with a local manufacturer to facilitate in-house assembly of its products and later establish a headquarters

as it scales. Currently in the research and development stage, ExoPower was previously awarded a grant from the National Science Foundation (NSF) for \$252,000 in 2023, and an Advanced Industries Early-Stage Capital and Retention grant of \$100,000 through the Colorado Office of Economic Development and International Trade (OEDIT) in 2024.

As part of the Rural Jump-Start Program, ExoPower will now have access to significant tax breaks and cash grants for up to eight years, as well as access to Colorado Mesa University's talent pipeline for internships, recent graduates, and alumni.

***"Being located in Grand Junction allows us to take advantage of the rural nature of the community. There are many advantages such as the Rural Jump-Start Program and the Advanced Industries Tax Credit Program for high tech companies based in Colorado, especially those outside of the Front Range,"*** stated Dr. Brandon Regensburger, CEO of ExoPower.



Grand Valley Ice

# GRAND VALLEY ICE BRINGS PREMIUM COCKTAIL ICE TO MESA COUNTY & BEYOND

Locally born start-up, Grand Valley Ice aims to fill a significant gap in Mesa County by providing clear, premium-quality cocktail ice to local bars, restaurants, and liquor stores. The company stands out as the only local option for obtaining clear ice without the need to travel to Denver or Salt Lake City. Their entry into the market will provide a much-needed service and enable customers to have a competitive edge, attracting customers seeking a superior experience.

Grand Valley Ice plans to purchase an additional machine within the first 12 months of operation, allowing it to expand its reach to customers throughout western Colorado, including Mesa County, Glenwood Springs, Aspen, and Snowmass.

The Grand Junction Economic Partnership has worked closely with Grand Valley Ice during their Rural Jump-Start application, which will now provide the company with financial incentives and tax relief to not only help them launch and grow, but also contribute to the overall economic growth of Mesa County. Grand Valley Ice is currently operating through the Business Incubator Center with plans to expand as the company grows.

## ECONOMIC IMPACT IN MESA COUNTY

Rural Jump-Start is a program locally born in Mesa County and part of a statewide effort to provide more opportunities for employment and career growth in rural areas. Participating companies are eligible to receive significant tax breaks and cash grants for up to 8 years. If a business is located in a Rural Jump-Start zone, they can receive up to \$15,000 as a newly established business..

***Since the program's inception in 2016, GJEP has utilized this program to support economic development in Mesa County. These efforts have yielded:***

**30**

COMPANY APPROVALS

**168**

NEW PRIMARY JOBS

**333**

PROJECTED PRIMARY JOBS

**\$31,746,884** IN TOTAL ECONOMIC IMPACT  
DUE TO JOB CREATION & CAPITAL INVESTMENT

Learn more about the program at [gjep.org/jump-start](http://gjep.org/jump-start)



# OAKSTAR BANK BREAKS GROUND AT THE RIVERFRONT AT LAS COLONIAS

OakStar Bank has officially broken ground on its new 12,000-square-foot facility at the Riverfront at Las Colonias Park. The new facility will bring a dynamic mix of restaurant, retail, and office space to the growing business district and is anticipated to be completed in 2025.

Since establishing its presence in the Grand Junction area in 2021, OakStar Bank has remained committed to supporting long-term investment in the region through their expansion. OakStar Bank has partnered with local firm, FCI Constructors, for the development.

The Grand Junction Economic Partnership (GJEP) and the Las Colonias Development Corporation (LCDC) played key roles in this expansion by identifying suitable sites for the new facility and supporting lease agreements for the property.

OakStar Bank's new facility is a testament to Grand Junction's thriving business environment, reinforcing the Riverfront at Las Colonias as a premier destination for innovation and growth.

***"OakStar Bank is committed to serving our community while providing a different and dynamic banking experience. Our choice to build at Las Colonias is based on the same belief. We are excited to create this experience on the banks of the Colorado River and thank GJEP and our loyal community members who have afforded us this opportunity."***  
shared Clay Tufly, Market President for OakStar Bank.

**For more information on the Riverfront at Las Colonias and available sites, please visit [gjep.org/sites-and-buildings](https://gjep.org/sites-and-buildings) or contact us.**



# ECONOMIC DEVELOPMENT RESOURCES

*The Grand Junction Economic Partnership provides no-cost business development services including navigating available business development programs and incentive eligibility, site selection support, and connections to key community stakeholders.*

## FEATURED PROGRAMS & INCENTIVES

**The Job-Growth Tax Incentive:** Performance based program for businesses pursuing job creation projects that would otherwise not occur in Colorado. Businesses creating at least 20 net new primary jobs within a credit period may be eligible for a state income tax credit equal to 50% FICA paid.

**The Advanced Industries Program:** Businesses operating within one of Colorado's seven advanced industries (Advanced Manufacturing, Aerospace, Bioscience, Electronics, Energy and Natural Resources, Infrastructure Engineering, Technology and Information) may be eligible for an early-stage capital and retention grants, proof of concept grant, export grants, or trade show stipend.

**The Rural Jump Start Program:** New and expanding businesses in Mesa County may be eligible for a "tax holiday" for up to eight years, and they can receive up to \$15,000 as a newly established business. To be eligible, businesses must create a minimum of five primary new jobs, cannot be moving existing jobs away from another part of the state, cannot be in direct competition with another business in Mesa County, and must add to the economic base and export goods or services outside of the region



**COLORADO**  
Office of Economic Development  
& International Trade

**GRAND JUNCTION** economic  
PARTNERSHIP



**SCAN TO SEE AVAILABLE  
SITES & BUILDINGS**

## EXPLORE AVAILABLE SITES & BUILDINGS

GJEP's interactive Sites & Buildings tool provides a seamless way to explore active commercial real estate listings across Mesa County. This dynamic platform pulls in up-to-date property data, allowing users to filter by size, zoning, location, and other key criteria to find the perfect site for their business needs. Whether you're a site selector, developer, or business leader looking to expand, this tool makes it easy to identify opportunities and make informed decisions.

*Explore available resources at  
[gjep.org/business-resources](http://gjep.org/business-resources)*

# PROSPECT DEVELOPMENT

**30**

Lead

**80**

Level 1

**14**

Level 2

**7**

Level 3

## TOP SOURCES:

### Direct Inquiry

42%

### Trade Show

27%

### Local Referral

20%

### Brokers

4%

### Cold Outreach

3%

### Other

3%

### OEDIT

1%

## TOP INDUSTRIES:

**25%** Outdoor Recreation

**13%** Aviation / Aerospace

**9%** General Manufacturing

**9%** Professional Services

**8%** Construction

**6%** Technology

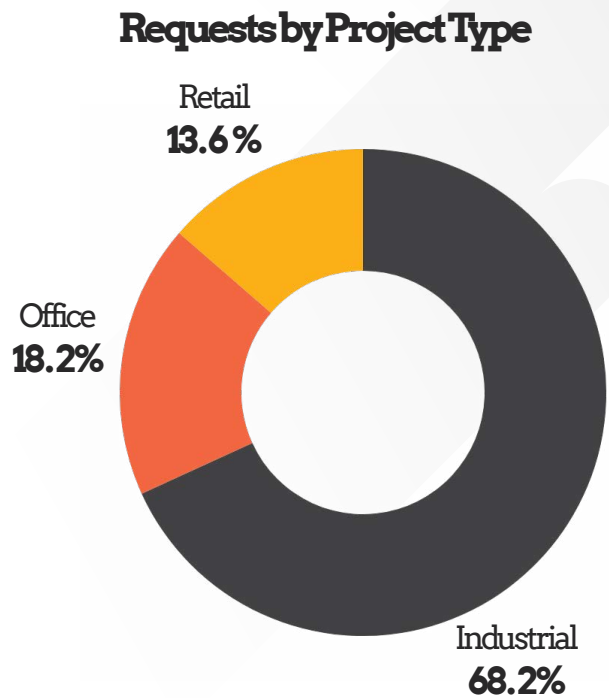
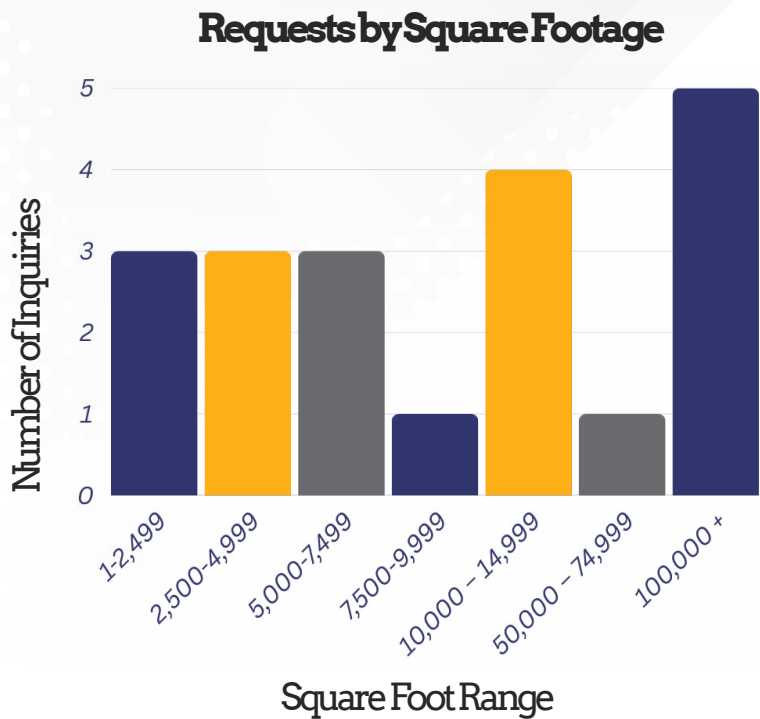
*50% of current prospects contain a manufacturing component*

## 2024 TRADE SHOWS ATTENDED

- Air & Space Forces Association (AFA) Warfare Symposium - Denver, CO
- Sea Otter Classic - Monterey, CA
- Overland Mountain West - Loveland, CO

*Data updated February 2025*

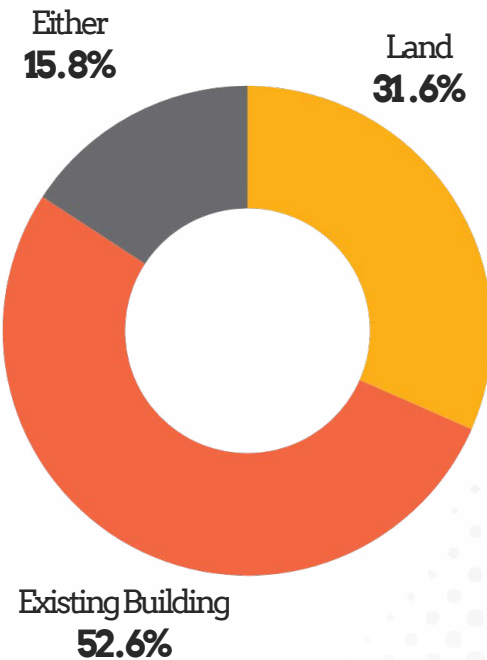
# 2024 COMMERCIAL REAL ESTATE REQUESTS



The commercial real estate request data provides valuable insight into the specific property needs of businesses considering Mesa County for expansion or relocation. This information is gathered directly from prospective companies that engage with GJEP.

By tracking these trends, we can better understand market demand, guide strategic planning, and collaborate with local partners to ensure our region is well-positioned to meet the needs of growing industries.

*Data reflects January - December 2024*





*Partnerships in Action*

# GJEP CELEBRATES 40 YEARS OF ECONOMIC DEVELOPMENT

In 1984, in the wake of “Black Sunday” as an industry bust left Mesa County’s economy reeling with record levels of unemployment and a mass exodus of labor force, the Mesa County Economic Development Council, now known as the Grand Junction Economic Partnership, was formed by local leaders with a mission to revitalize the local economy through proactive business attraction and recruitment.

Fast forward to 2024, we’re celebrating 40 years of community growth, economic development, and sustained success. We honor and celebrate the commitment of each and every stakeholder that has been involved with GJEP’s mission over the past four decades. It is because of your support that our organization has been able to impact economic diversification, job creation, and an enhanced quality of life in Mesa County.



(Left) Founding member, Brian Mahoney, recounts the early days of MCEDC during 40th anniversary celebration



(Right) GJEP Executive Director, Curtis Englehart, with Board Members, Denny Granum (founding member) and Pat Tucker



MCEDC Founding Members (Left to Right): Joe Prinster, Ken Nesbitt, Jim Kennedy, Denny Granum, Kenneth Hamon, Terry Farina, Curt Reimer, Dennis Kirtland, Peggy Foster, Jim Fleming, and Brian Mahoney. (1984)

# *GJEP Through The Years...*



- 1982 - 1984** “Black Sunday” marks the end of the energy boom on the Western Slope. Unemployment reaches 12%, with significant job losses. In response, area leaders form the Mesa County Economic Development Council (MCEDC) with a mission to enhance the local economy and attract businesses in 1984.
- 1985 - 1989** MCEDC fundraises \$1.7M for economic development, resulting in successful recruitments like Sundstrand Corporation and American Racing. Mesa County begins to recover, with population and job growth resuming by the end of the decade.
- 1990 - 1995** MCEDC recruitments include Western Filament, Roadway Express, Reynolds Polymer Technology, and Mesa Airlines. During this period, 21 new businesses, 840 jobs, and \$38M in capital investment were achieved.
- 1996 - 2000** MCEDC recruitments include DT Swiss Bike Technology, Jobsite, and Startek USA. By 2001, MCEDC rebranded as the Grand Junction Economic Partnership (GJEP) to focus on quality job creation and launched its website.
- 2001 - 2005** Despite national recession challenges, GJEP attracts businesses like Schlumberger and Twin Otter International. GJEP fundraises \$2.1M for continued economic development, but the closure of Hamilton Sundstrand resulted in 340 job losses.
- 2006 - 2010** Job growth reached 7.31%, and GJEP supports recruitments including Timber Creek Homes and Leitner-Poma of America. The energy sector helped unemployment drop below 3%. GJEP began supporting business expansions, contributing to job growth.
- 2011 - 2015** GJEP continues its momentum, with recruitments and expansion support, including West Star Aviation, FedEx Ground, and CSL Plasma. GJEP, local leaders, and the state collaborate on language for the Rural Jump Start Program (RJS). GJEP helps facilitate public-private partnership for Las Colonias Business Park.
- 2016 - 2020** GJEP guides seven businesses into the RJS program, facilitating recruitments like ProStar Geocorp, Phoenix Haus, Timberleaf Trailers, and Certek Heating Solutions. Job creation and capital investment rise steadily, contributing to significant economic impact despite external challenges.
- 2021 - 2023** Major recruitments and local expansions supported include Lyttle’s Fleet Maintenance, Pax8, CoorsTek, and Spartan Drill Tools. GJEP attracts hundreds of jobs and millions in capital investments, with 2023 seeing a total economic impact of \$52.3M.
- 2024** GJEP continues its work with recruitments like Amazon, Goose Gear, Kooler Garage Doors, Tandem Studios, ExoPower, and Grand Valley Ice, maintaining its legacy of economic development and partnership in Mesa County.





# WESTERN COLORADO ECONOMIC SUMMIT

The Western Colorado Economic Summit is the premier gathering of business leaders, policymakers, and economic development professionals dedicated to driving growth and innovation in our region. Hosted by the Grand Junction Economic Partnership, this annual event brings together 500 industry experts to explore key economic trends, investment opportunities, and strategies for sustainable development, catalyzing collaboration and progress in Western Colorado.

## *2024's Programming Featured...*

- A breakfast keynote presented by Dr. Nathan Perry, economist and professor at Colorado Mesa University, including key updates on the state of Mesa County and Colorado's Economy
- Nine total breakout sessions on topics including housing, healthcare, enaging our emerging workforce, real estate, agriculture, tourism, opportunities for business expansion, and key update from the Grand Junction Regional Airport and local civic leaders
- An engaging lunch keynote by cybersecurity expert, Kurtis Minder, CEO of GroupSense



**2024 Spirit of Economic Development Award:** SG Aerospace & Gas

**2024 Joseph C. Prinster Leadership Award:** Jamie Hamilton





Kurtis Minder, CEO of GroupSense, presents lunch keynote



Mike & Shannon Sneddon accept Spirit of Economic Development Award on behalf of SG Aerospace



(Left) Jamie Hamilton accepts the Joseph C. Prinster leadership award ; (Right) Cody Kennedy - City of Grand Junction , Bobbie Daniel - Mesa County, Greg Mikolai - Town of Palisde ; (Bottom) Dr. Nathan Perry presents breakfast keynote to 2024 WCES attendees



Learn more about the Western Colorado Economic Summit at  
***GJEP.ORG / WCES***

# GJEP'S PRESENCE

## ***GJEP Recognized by International Economic Development Council (IEDC) for 2023 Annual Report***



INTERNATIONAL ECONOMIC DEVELOPMENT COUNCIL



***"Grand Junction Economic Partnership is setting the standard of excellence for economic development through its Annual Report. This award highlights their commitment to their community and demonstrates the transformative impact of economic development. It is with great pride that IEDC presents this award to Grand Junction Economic Partnership, celebrating their leadership and innovation in the field of economic development."***

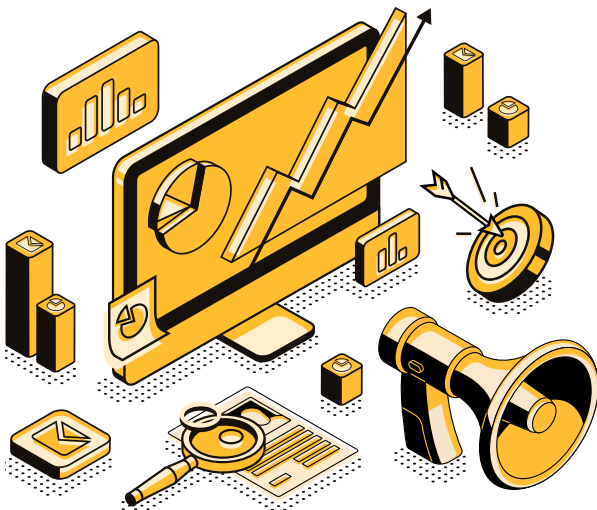
*Nathan Ohle, IEDC President and CEO*

## ***Digital Marketing Highlights:***

**>3.9M**  
DIGITAL  
AD IMPRESSIONS

**>32,000**  
UNIQUE WEB VISITS

**+944**  
NEW SOCIAL MEDIA  
FOLLOWERS



***Keep up with the latest news!***



[info.gjep.org/subscribe](http://info.gjep.org/subscribe)





# MAXIMIZE YOUR IMPACT BY PARTNERING WITH GJEP

**When you invest in GJEP, you join a network of leaders shaping a diverse economy and a strong future for generations to come.**

It is through the support of our public and private partners and the community at large that we are able to engage in proactive business recruitment and expansion efforts that leave a lasting impact on Mesa County's economy.

## **YOUR SUPPORT ENABLES OUR ORGANIZATION TO:**

- ✓ Assist business relocation and expansion by facilitating site selection, incentive negotiations, workforce development support, and community connections
- ✓ Promote Mesa County's business assets and key industries through targeted marketing and proactive outreach
- ✓ Identify opportunities to diversify our regional economy by championing strategic initiatives and reporting industry trends



# THANK YOU FOR YOUR SUPPORT!

It is through the support of our investors that we are able to shape a diverse economy and strong future.

## OUR CHAIRMAN'S CIRCLE PARTNERS:



St. Mary's Regional Hospital



**GRAND JUNCTION** economic  
PARTNERSHIP  
**GJEP.ORG/INVEST • 970-245-4332**

Annual report developed and designed by  
Selena Sanchez, Director of Marketing - Grand Junction Economic Partnership